

## Saliva DNA Isolation 96-Well Kit

Norgen's Saliva DNA Isolation 96-Well Kit provides a rapid method for the high-throughput isolation of total DNA from saliva. Human genomic DNA extracted from buccal epithelial cells and white blood cells found in saliva can be used in various applications in diagnostics. The DNA can be used for the detection of biomarkers to diagnose a disease, follow the disease's progress or monitor the effects of a particular treatment. Saliva DNA can also be used to diagnose particular types of infections. Isolation of DNA from saliva has become an attractive alternative to isolation from blood or tissue due to the fact that sample collection is non-invasive, the samples can be collected by individuals with little training, and no special equipment is



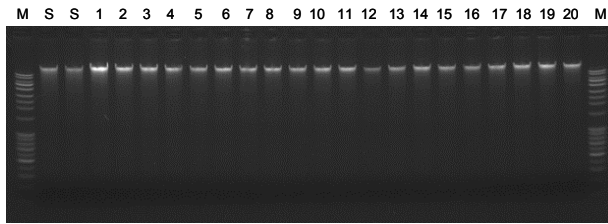
required. The saliva DNA purified using Norgen's kit is of the highest integrity, and can be used in a number of downstream research applications including real time PCR, Southern blotting, sequencing, macro/micro array and SNP assays. This product is also compatible with Norgen's Saliva DNA Collection, Preservation and Isolation Kits, as well as Norgen's Buccal DNA Collection and Preservation Kit.

Kit Specifications			
Binding Capacity per Well	50 µg	Size of DNA Purified	All sizes
Maximum Loading Volume per Well	600 µL	Time to Complete 96 Purifications	40 minutes

### Saliva DNA Isolation 96-Well Kit Benefits

Fast and easy processing	High throughput purification using 96-well plates. Purification can be performed using a vacuum manifold or centrifugation.
Compatible with Norgen's Collection and Preservation Kit	This product allows for the isolation of DNA from samples collected and preserved with Norgen's Saliva DNA Collection, Preservation and Isolation Kit (Cat# RU35700)
Isolate DNA from small saliva samples	DNA can be isolated and detected from small amounts of saliva collected using swabs.
Recovered DNA is suitable for various downstream applications	Purified saliva DNA can be used in a number of downstream applications including PCR, Southern Blot analysis, sequencing and microarray analysis.

## Saliva DNA Isolation 96-Well Kit



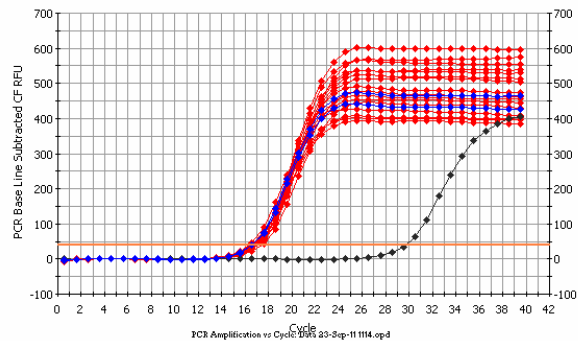
**Figure 1. Consistent DNA Isolation.** Saliva samples were collected from 10 donors using Norgen's Saliva DNA Collection, Preservation and Isolation Kit (Cat#RU35700). Norgen's Saliva Preservative was added to the saliva samples, and the 10 samples were then pooled together. Total DNA was then isolated from the pooled saliva using columns from Norgen's Saliva DNA Isolation Kit (Cat# RU45400) or Norgen's Saliva DNA Isolation 96-Well Kit. Ten  $\mu\text{L}$  of each 100  $\mu\text{L}$  elution from the 96-well plates were loaded on 1.2 % TAE agarose gel (Lanes 1 to 20), with the results indicating that the DNA isolation was consistent between the samples. S: DNA isolated using a single column (eluted in 200  $\mu\text{L}$ ). Lane M: Norgen's HighRanger 1kb DNA Ladder.

### Saliva DNA Isolation 96-Well Kit Contents

1. Lysis Buffer F
2. Proteinase K
3. Binding Buffer B
4. Wash Solution A
5. Elution Buffer B
6. 96-Well Plate
7. 96-Well Collection Plate
8. Adhesive Tape
9. 96-Well Elution Plate
10. Product Insert

### Shipping Conditions

The Saliva DNA Isolation 96-Well Kit is shipped at room temperature.



### Figure 2. Real-time PCR Consistency from Saliva Samples.

Saliva DNA was isolated from pooled saliva samples using Norgen's Saliva DNA Isolation 96-Well Kit and Norgen's Saliva DNA Isolation Kit (Cat#RU45400) as outlined above. From the 100  $\mu\text{L}$  elution, 2  $\mu\text{L}$  of saliva DNA was directly mixed to real-time PCR master mix (total reaction volume 20  $\mu\text{L}$ ), and the real-time PCR reaction was performed. The GAPDH gene was successfully amplified from the different samples without any inhibition, indicating the isolation consistency and the excellent quality of saliva DNA for downstream applications. Red: DNA samples isolated from the 96 well plate. Blue: DNA samples isolated using the single column. Black: Negative control.

### Customer-Supplied Reagents and Equipment

- Isopropanol
- Collection/Waste Tray for vacuum manifold or 96-well bottom plate for centrifugation.
- Vacuum manifold or centrifuge with rotor for 96-well plate

### Storage Conditions

All solutions should be kept tightly sealed and stored at room temperature. These reagents should remain stable for at least 2 years in their unopened containers. Proteinase K can be stored at room temperature or 4°C.

Cat #	Description	Quantity
RU35200	Saliva DNA Isolation 96-Well Kit	192 preps (2 plates)