

# EZCollect

## EZCollect Saliva DNA Device Dx

For Safe and Rapid Home-Based Self Collection; and  
Preservation of Saliva DNA



**Collect before  
July 2027**

For use by people 18 years of age or older.

Norgen Biotek Corp.  
3430 Schmon Pkwy,  
Thorold, ON L2V 4Y6  
Canada  
905-227-8848



IVD

\*G226699000\$EMMYXXXXXXQ1A\*

### Kit Components



1 x Saliva Collection Funnel  
1 x Collection Tube containing Norgen's  
saliva DNA Preservative  
1 x Collection Tube Cap

REF 69900

LOT 612650



WARNING  
H302, H412.



Store at room  
temperature (15-30°C)



EC REP

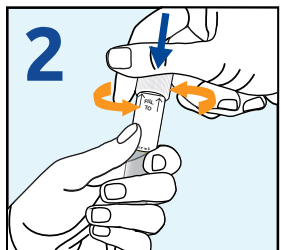
EMENDO EUROPE  
Steinstraatweg 61  
8027 AF Arnhem  
The Netherlands

### Collection Protocol



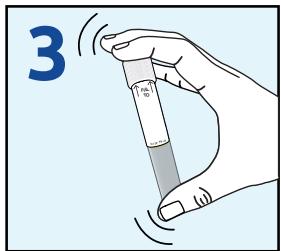
Deposit saliva into the **Collection Tube** up to the indicated fill line.

If you notice excess bubbles, eliminate them by gently tapping the tube on a hard surface.



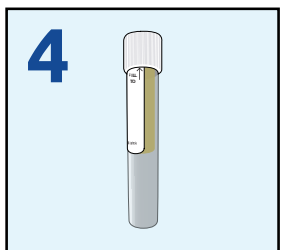
Remove the **Collection Funnel**. **Cap** the Collection Tube by **pushing down** and **twisting** until secured, and the **Yellow Saliva DNA Preservative** will be released.

Discard or recycle the Collection Funnel.



Shake well for 10 seconds to mix the saliva with the **Yellow Saliva DNA Preservative**.

The saliva sample is preserved and pathogens, viruses along with bacteria are now inactivated.



The **Collection Tube**, containing the saliva sample is ready for transport.

#### Intended Use:

Norgen's EZCollect Saliva DNA Device Dx is designed for 1) simple and non-invasive home-based saliva collection, 2) inactivation of pathogens, viruses and bacteria, and 3) preservation of DNA in saliva samples at ambient temperature. Intended for in vitro diagnostic use for medical purposes.

#### Storage:

This device should be stored at room temperature for up to 2 years without any reduction in performance prior to Saliva Sample Collection. After the Saliva Sample Collection, the saliva DNA in preserved samples is stable for up to 6 years at room temperature (15-30°C).

#### Before starting the sample collection:

Do not eat, drink, smoke, chew gum, brush or floss for 30 minutes before collection. Rub your cheeks and wiggle your tongue to stimulate the secretion of saliva. It may take up to 7 minutes to collect the sample. Do not exceed 30 minutes for sample collection.

#### Warnings:

If any of the Saliva DNA Preservative comes into contact with skin or eyes, wash thoroughly with water. Do not ingest the Saliva DNA Preservative. The collection device contains a choking hazard (Collection Tube Cap). Keep away from children. The Saliva DNA Preservative and preserved saliva samples will form reactive compounds when combined with bleach, thus care must be taken to properly dispose of any spilled preservative or remaining samples.

Should any serious incident, such as injury or impairment of the user, occur during the use of this device, or because of the use of this device, please contact Norgen Biotek to report the incident. Additionally, report the incident to the competent authority in the country in which the user is located.

Tech support: [techsupport@norgenbiotek.com](mailto:techsupport@norgenbiotek.com)

Orders: [orders@norgenbiotek.com](mailto:orders@norgenbiotek.com)

Made in CANADA

DI69900-1



Scan for instructional video or visit [norgenbiotek.com/ezcollect/salivadna](http://norgenbiotek.com/ezcollect/salivadna)

**Patented and/or patent pending.**