

## Urine DNA Isolation Kit Dx (Slurry Format)

Norgen's Urine DNA Isolation Kit Dx (Slurry Format) provides a fast, reliable and simple procedure for isolating DNA from various amounts of urine ranging from 3 mL to 25 mL for subsequent *in vitro* diagnostic use. Both human and viral DNA can be isolated using this kit.

This kit is designed to be used with any downstream application employing enzymatic amplification or other enzymatic modifications of DNA followed by signal detection or amplification. Any diagnostic results generated using the DNA isolated with Norgen's Urine DNA Isolation Kit Dx (Slurry Format) in conjunction with an *in vitro* diagnostic assay should be interpreted with regard to other clinical or laboratory findings.





To minimize irregularities in diagnostic results, suitable controls for downstream applications should be used.

Norgen's Urine DNA Isolation Kit Dx (Slurry Format) is intended for use by professional users such as technicians, physicians and biologists experienced and trained in molecular biological techniques including DNA isolation.

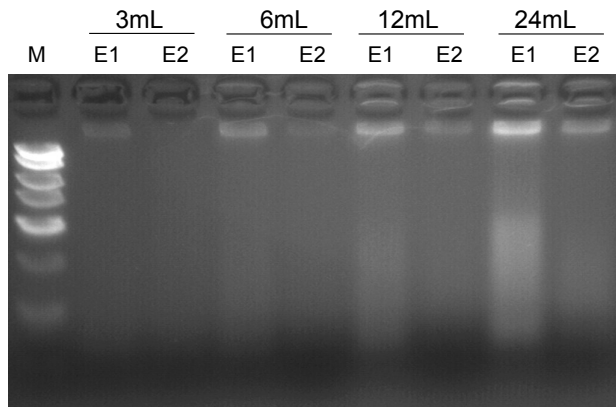
Norgen's Urine DNA Isolation Kit Dx (Slurry Format) does not provide a diagnostic result. It is the sole responsibility of the user to use and validate the kit in conjunction with a downstream *in vitro* diagnostic assay.

| Kit Specifications  |       |                               |                                     |
|---------------------|-------|-------------------------------|-------------------------------------|
| Minimum Urine Input | 3 mL  | Time to Complete Purification | < 30 minutes                        |
| Maximum Urine Input | 25 mL | Size of Urine DNA Purified    | Large (>1kb) and small (150-250 bp) |

### Urine DNA Isolation Kit Dx (Slurry Format) Benefits

|                                      |   |  |
|--------------------------------------|---|--|
| Fast processing                      |   | Rapid spin-column format allows for the processing of multiple samples in under 30 minutes.  |
| Isolation of both types of urine DNA |   | Isolate both high molecular weight DNA (greater than 1 kb in size; mostly cell associated) and the smaller DNA (150 - 250 bp; derived from the circulation).   |
| Isolation viral DNA from urine       |   | Isolate viral DNA from a broad range of DNA viruses. The viral DNA is isolated free from inhibitors and can be used directly as the template in a PCR reaction for viral DNA detection.  |
| High quality DNA                     |  | Removal of highly concentrated salts, metabolic wastes and proteins provides high quality, concentrated DNA to be used in various downstream applications employing enzymatic amplification or other enzymatic modification of DNA followed by signal detection or amplification for <i>in vitro</i> diagnostic use. |
| CE Marked Product                    |  | This CE Marked kit is ideal for isolating DNA samples for <i>in vitro</i> diagnostic use.  |

## Urine DNA Isolation Kit Dx (Slurry Format)



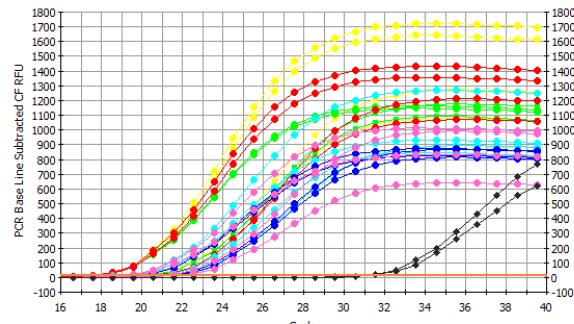
**Figure 1. Typical Agarose Gel Showing Total Urinary DNA Isolated from Different Urine Volumes using Norgen's Urine DNA Isolation Kit Dx (Slurry Format).** Total urinary DNA was isolated from 3 mL, 6 mL, 12 mL and 24 mL of urine. Total urinary DNA was isolated from each urine sample according to the isolation protocol that is optimized for different sample volumes. The isolated DNA was eluted into two separate elutions (E1 and E2). The purified urine DNA was then loaded onto a 1.5% agarose gel. Each lane shows one tenth from each elution. It can be seen that the first elution contains most of urinary DNA whereas the second elution contains the rest of the urinary DNA isolated. Lane M is 10 µL of Norgen's FastRunner DNA Ladder.

### Urine DNA Isolation Kit Dx (Slurry Format) Contents

1. Solution A
2. Solution B
3. Wash Solution
4. Elution Buffer
5. Mini Filter Spin Columns
6. Collection Tubes
7. Elution tubes (1.7 mL)
8. Product Insert

### Shipping Conditions

The Urine DNA Isolation Kit Dx (Slurry Format) is shipped at room temperature.



**Figure 2. Isolation and Detection of DNA from Different Volumes of Urine.** Total genomic DNA was isolated from 3, 6, 12 and 24 mL urine samples using Norgen's Urine DNA Isolation Kit Dx (Slurry Format). The urinary DNA was isolated from each urine sample according to the provided protocol, and the DNA was eluted into two separate elutions (E1 and E2). The isolated DNA was then subjected to quantitative PCR using human 5S gene primers to detect the genomic DNA. To test the absence of PCR inhibitors usually accompanying DNA isolated from urine, an increasing amount from each elution (1, 3, 6 and 9 µL) was used as a template in the PCR reaction. Urinary genomic DNA was successfully detected from all the different urine volumes with no sign of PCR inhibition, even when 9 µL of urine DNA was used as the template.

### Customer-Supplied Reagents and Equipment

- Centrifuge with a swinging bucket rotor
- Benchtop microcentrifuge
- Micropipettors
- 96 – 100% ethanol
- 15 and 50 mL tubes
- 60°C incubator
- Lysozyme Stock Solution
- Proteinase K

| Cat #   | Description                                | Quantity   |
|---------|--|------------|
| Dx48800 | Urine DNA Isolation Kit Dx (Slurry Format) | 50 columns |

**NOTE:** This product is not for sale in the United States

3430 Schmon Parkway, Thorold, ON, Canada L2V 4Y6

Phone: 905-227-8848 Fax: 905-227-1061

North American Toll Free: 1-866-667-4362